

# Street View

## Famous street views



Paris Street; Rainy Day by Gustave Caillebotte, 1890



Houses at Auvers by Vincent van Gogh, 1890

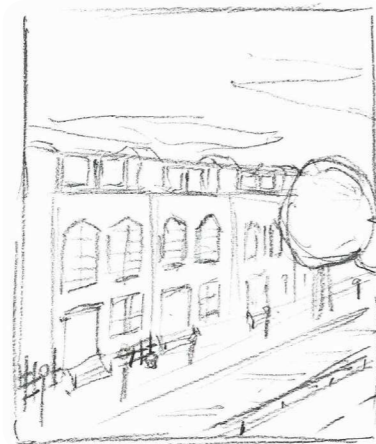
## Comparing street views

Artwork can be compared. The subject, colour, form, texture or composition of two pieces of artwork can be similar or different.



## Thumbnail sketches

Thumbnail sketches are quick drawings that are usually very small. They help artists to remember important features or plan what a finished piece of artwork will look like.



thumbnail sketch

## James Rizzi

James Rizzi (1950–2011) was an American pop artist. He used painting, printing and sculpture in his work. His style was bright and colourful. He usually included tall buildings and people in his pictures. He used foam blocks to make parts of his work stand out. His pictures were inspired by everyday life in New York where he lived.



James Rizzi

## Cardboard layering technique

Layers of corrugated cardboard can be glued to the back of cut outs to create a 3-D effect.



Five layers of cardboard make this window stand out.

## Murals

A mural is a large picture that is usually painted onto a wall, ceiling or other structure.



The Gifford Park mural by Kate George, 2015

## Parts of a building



## Glossary

|                    |  |
|--------------------|--|
| <b>3-D effect</b>  | When objects stand out from a flat surface.  |
| <b>artwork</b>     | An object made by an artist, such as a drawing, painting or sculpture.   |
| <b>composition</b> | How things or people are arranged in a piece of artwork.   |
| <b>form</b>        | The shape of an object in a piece of artwork.  |
| <b>Pop Art</b>     | A modern type of art that is usually colourful and features ordinary people, buildings or objects. Pop Art started in the 1960s. |
| <b>subject</b>     | The person, place or thing that is the main focus of a piece of artwork.   |
| <b>texture</b>     | The surface of a piece of artwork. Texture can be described using words like rough or smooth.                                    |